

General Election

Tuesday, November 3, 2020

Instructions for Voting – Your Vote, Your Choice

Thank you for voting! This booklet contains information about how to return and cast your ballot. For this election we are required to send every active registered voter a ballot. Your vote by mail ballot is enclosed.

How you vote and return this ballot is up to you. In person voting options are still available. If you choose to vote in person, bring this ballot and return envelope with you.


Cathy Darling Allen

How to Return Your Ballot

Ballots we receive prior to Election Day are tabulated first! It is these ballots that are included in the initial election night reporting at 8pm on Election Night.

There are four different ways you can return your ballot:

Tally Your Own Vote



Make your ballot one of the first to be counted! Bring your ballot to the Elections Office beginning October 5th and cast your vote in an early vote scanner. We are located at 1643 Market St in Redding, CA and open:

- Monday through Friday from 8am to 5pm
- Saturday, October 24th from 9am to 3pm
- Saturday, October 31st from 9am to 3pm

Use a Drop Box



You can help save local tax dollars by returning your ballot to any of the fourteen Shasta County Official Ballot Drop Box locations. See the following pages for a list of both 24 Hour and Staffed Drop Box Locations.

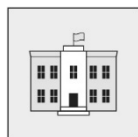
All drop boxes close at 8pm on November 3rd.

Mail Your Ballot



Mail your ballot so that it is postmarked on or before Election Day and received by county elections no later than 17 days after Election Day.

Polling Place



On Election Day, take your ballot to your polling place and cast your vote in the vote scanner or drop your voted ballot off.

24 Hour Drop Box Locations

The following drop boxes are open 24 hours a day until 8pm Election Day. These boxes are checked every 24 – 48 hours.

Redding

Shasta County Elections Office	1643 Market Street	Look under the green awning at the south end of the Market Street Promenade.
Redding City Hall	777 Cypress Avenue	Look in front of the building, next to the Utility Payment Drop Box.
Redding Electric Utility	3611 Avtech Parkway	Look to the side of the building, next to the Utility Payment Drop Box.

Anderson

Anderson City Hall	1887 Howard Street	Look in front of the building near the corner of Howard and Silver streets.
--------------------	--------------------	---

Burney

Shasta County Sheriff-Burney Station	20509 Shasta Street	Look in front of the building next to the main entrance.
--------------------------------------	---------------------	--

Shasta Lake

Shasta Lake Visitor Center	1525 Median Avenue	Look in front of the building next to the main entrance.
----------------------------	--------------------	--

Track Your Ballot @ ShastaVotes.com

Receive notifications when your ballot is mailed to you for each election and when we've received your ballot and prepared it for tabulation.

Sign up at ShastaVotes.com to receive automatic email, SMS (text), or voice call notifications about your ballot.



Staffed Drop Box Locations

The following drop boxes are located at local businesses and are available during the locations' normal business hours from October 6 through November 3. On Election Day, boxes close at 8pm.

Redding

Holiday Market	3315 Placer Street	Open 6am-11pm
Holiday Market	2455 Hartnell Avenue	Open 6am-10pm
Sav Mor	6536 Westside Road	Open 7am-10pm

Anderson

Happy Valley Country Market	5235 Happy Valley Road	Open M-F , 6:30am-10pm and Sat-Sun, 7am-9pm
-----------------------------	------------------------	---

Bella Vista

My-T-Fine Foods	21919 CA-299	Open 6am-10pm
-----------------	--------------	---------------

Cottonwood

Holiday Market	20635 Gas Point Road	Open 6am-11pm
----------------	----------------------	---------------

Palo Cedro

Holiday Market	9350 Deschutes Road	Open 6am-11pm
----------------	---------------------	---------------

Shingletown

Reed's Market	7007 Shingle Glen Trail	Open 7am-9pm
---------------	-------------------------	--------------

Tally Your Ballot at Your Polling Place

On Election Day, you can either drop off your ballot or tally your ballot in the precinct scanner. Go to your polling place with your ballot and envelope and watch it be counted.

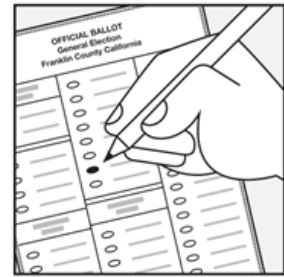
The name and address of your polling place is printed on the back of your County Voter Information Guide. You can also find your polling place, as well as a list of all county polling places, online at ShastaVotes.org or contact our office at 530-225-5730.

Remember, the Elections Office is also your polling place starting October 5th.

How to Complete Your Ballot

Mark your ballot card

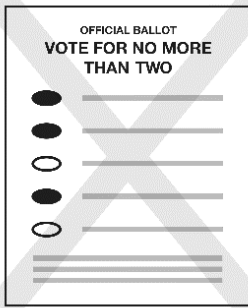
- Use blue or black ink to fill in the oval that is next to your choice.



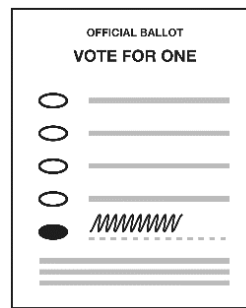
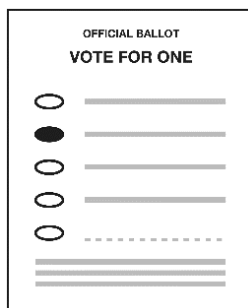
How to vote for a qualified write-in candidate

- Write the name of the qualified write-in candidate of your choice on the blank line at the end of the list of candidates.
- Fill in the oval next to it.
- A certified list of write-in candidates will be available on October 24. Call our office or visit our website.
 - 530-225-5730
 - ShastaVotes.org

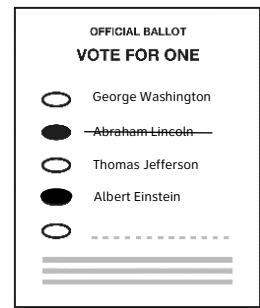
Check your ballot carefully



Don't vote for too many, only the number allowed



Fill in the oval, even on a write-in



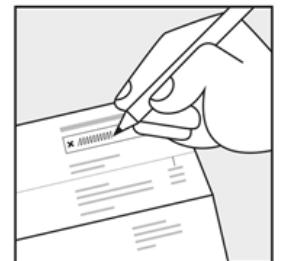
Cross out the mistake

If you make a mistake, you can:

- Cross out the entire name or choice that you marked by mistake. Fill in another oval to the left of your correct choice.
- Come to the Shasta County Elections Office and get a replacement ballot.

Sign your envelope

- Sign the voter declaration on your envelope.
 - Your vote cannot be counted without your signature.
- Print your name and address on the back of the envelope.



Seal the envelope

Return your ballot

- Use any of the four return options provided on the first page of these instructions.